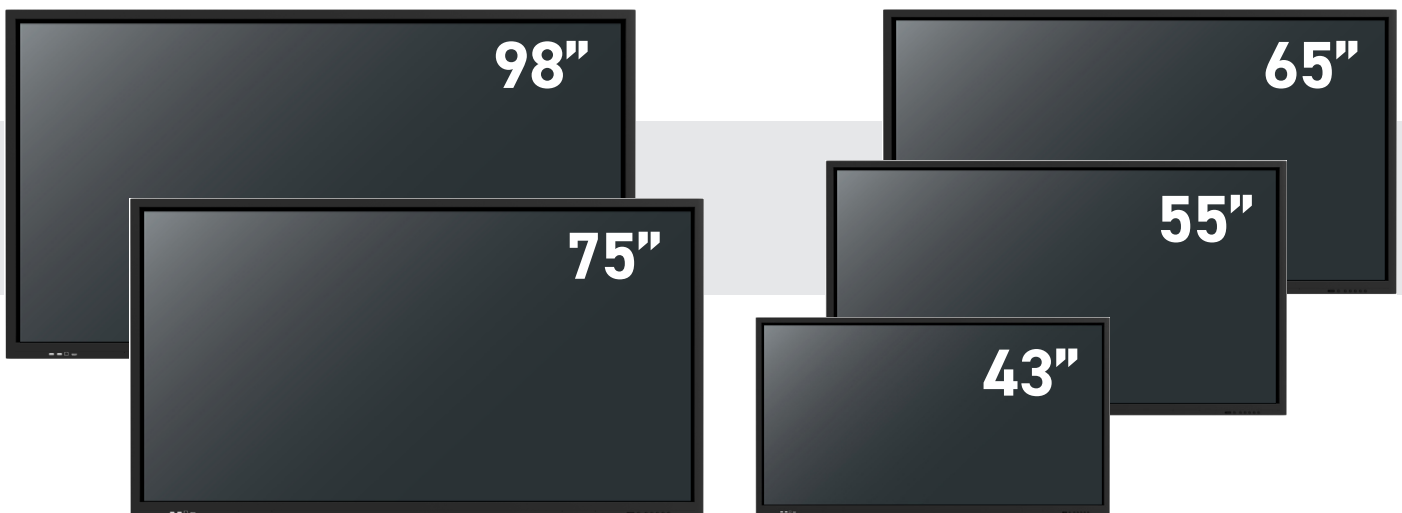




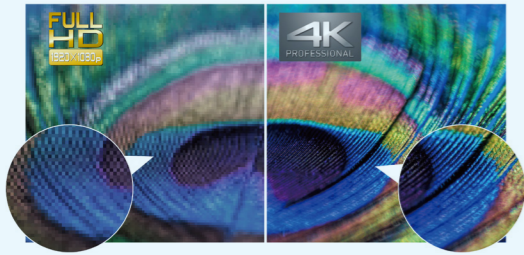
Stylish Designs Combine Powerful Function and Performance for Various Commercial Applications



Actual resolution: 3840x2160

Main Features

	TH-98SQD1	TH-75SQD1	TH-65SQP1	TH-55SQP1	TH-43SQP1
Screen size	98-inch	75-inch	65-inch	55-inch	43-inch
Brightness	500cd/m ²	550cd/m ²		500cd/m ²	
LCD Panel	IPS				
Resolution	3840 x 2160				
Functional Slot	SDM		OPS		



4K high picture quality down to the tiniest of details

4 times the pixels of a Full-HD displays are more effective to show visual information. 4K is not just a tool to fascinate a customer by displaying an appealing image, but can show the smallest of numbers and data in a meeting or a negotiation, also to attract your customer.

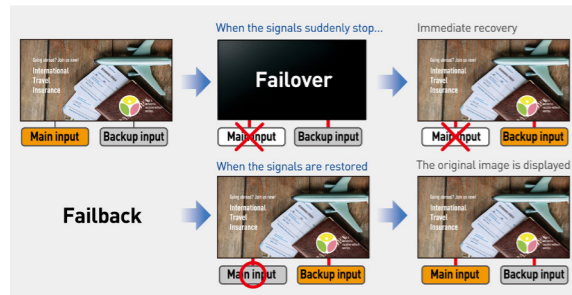
Efficiency and Reliability for Continuous 24-hour operation

The use of highly durable panel materials and quality electronic components ensures dependable 24-hour operation seven days a week.



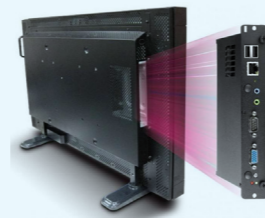
Failover and Failback Safeguards for Mission Critical Situations

If the main video and audio signals are interrupted, the system immediately switches to alternative signals. If main signals are restored, the image is displayed.



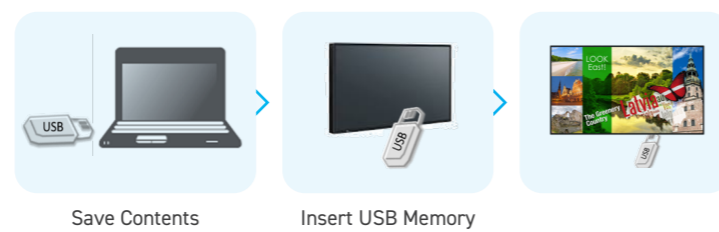
Supports the standard of Intel® SDM and OPS specification

The SQD1 Series is equipped with the new Intel® SDM specification slot standard that supports 4K signals. While the SQP1 Series is equipped with the Intel OPS, SDM Specification slot standard. Combined with the interface slot, you can easily use a built-in PC and add various interfaces



Simple Signage Operation using USB

The display can automatically start showing pictures when a USB memory containing data is inserted. The display unit can be used as digital signage without a set-top box or PC. And the content can be displayed smoothly without including the black screen display



Other products you might be interested in:



Projectors



PTZ Cameras



HD Visual Communications System



PressIT Wireless Presentation System

PressIT

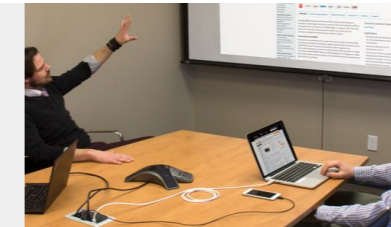
“PressIT” is a Panasonic's Wireless Presentation System that allows easy screen collaboration with just a single press of a button on a transmitter. There is no need for software/driver installation or network connection. Simply Plug and Play!

System Diagram



Without PressIT

Many cables on the table!



PressIT

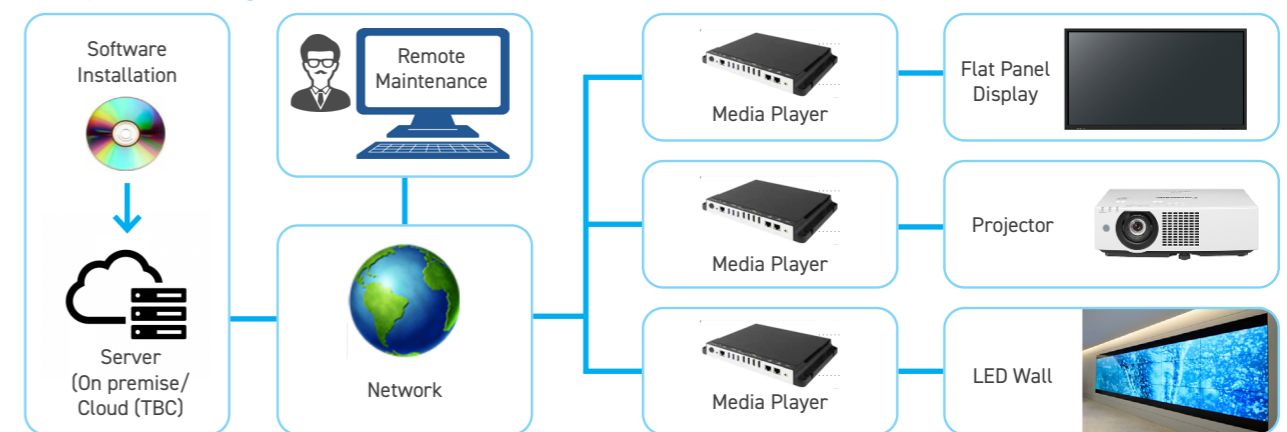
Nice and Clear Present from anywhere!



Digital Signage Solution

Panasonic Digital Signage Solution offers a centralized platform to manage content distribution to the network to our professional displays.

System Diagram



- Contents management
- Schedule edit
- Distribution management

Model Number		TH-98SQD1	TH-75SQD1	TH-65SQP1	TH-55SQP1	TH-43SQP1
Display Panel	Screen size	98-inch (2477mm)	75-inch (1892mm)	65-inch (1639mm)	55-inch (1388mm)	43-inch (1079mm)
	Aspect Ratio	16:9				
	Panel Type / Backlight	IPS/Direct LED				
	Effective Display Area (W x H)	2158.8 x 1214.3mm	1649.6 x 927.9mm	1428.4 x 803.5mm	1209.6 x 680.4mm	941.2 x 529.4mm
	Resolution (H x V)	3840 x 2160				
	Brightness (typ.)	500 cd/m ²	550 cd/m ²		500 cd/m ²	
	Contrast ratio	1,200:1				
	Dynamic Contrast Ratio	50,000:1				
	Response Time (G to G)	8 ms (G to G)				
	Viewing angle	178°/178° (CR>10)				
	Panel lifetime	50,000 hrs (typ.)				
	Panel Surface Treatment	Anti-Glare (Haze 28%)	Anti-Glare (Haze 1%)			
Terminals	HDMI In	HDMI Type A Connector x 2 (Compatible with HDCP 2.2)				
	DisplayPort In	DisplayPort x 1 (Compatible with HDCP 2.2)				
	DVI-D In	-		DVI-D 24-pin x 1		
	DVI-D Out	-		DVI-D 24-pin x 1		
	SDI In	-		BNC x 1		
	SDI Out	-		BNC x 1		
	PC In	Mini D-Sub 15-pin (DDC2B) x 1				
	Video IN	4-Pole Min Jack(M3) x 1			-	
	Component IN	4-Pole Min Jack(M3) x 1			-	
	Serial In/ Out	D-sub 9-pin x 1			RJ45 x 1, RS-232C Compatible (shared with IR In/ Out)	
	IR In/ Out	-			RJ45 x 1, RS-232C Compatible (shared with serial In/ Out)	
	Audio In	Stereo Mini Jack (M3) x 1				
	Audio Out	Stereo Mini Jack (M3) x 1				
	LAN	RJ45 x 2			RJ45 x 1	
	USB	USB Connector (Type A) x 2 USB 2.0			USB Connector (Type A) x 1 USB 2.0	
Function Slot	Intel® Smart Display Module			Intel® Open Pluggable Specification		
Electrical	Built-in Speaker	32W (16W +16W)			20W (10W + 10W)	
	Power Requirements	100-240 V AC, 50/60Hz				
	Power Consumption	400W	346W	210W	139W	136W
	On Mode Average Consumption	381W	320W	182W	120W	105W
	Standby Mode	Approx 0.5W				
Mechanical	Dimensions (WxHxD) in mm	2204.8 x 1260.3 x 92.7	1714.2 x 992.4 x 93.2	1476.7 x 851.7 x 79.3	1243.2 x 714 x 74.8	969.9 x 558.3 x 89.6
	Weight	73kg	40.2kg	29.2kg	18.4kg	11.8kg
	Bezel Width	T/R/L/B : 21.5mm	T/R/L/B : 31.5mm	T/R/L/B : 23.1mm	T/R/L/B : 13.9mm	
	Pitch for Wall-hanging	VESA Compliant				
	Orientation	800mm x 600mm	600mm x 400mm	600mm x 400mm	400mm x 400mm	400mm x 200mm
Operating Environment	Temperature	0°C to 40°C (Up to 5,000m Altitude)				
	Humidity	20-80% (Non Condensation)				

Panasonic

Weights and dimensions shown are approximate. Depending on the temperature or humidity conditions, uneven brightness may be observed. This is not a malfunction. This unevenness will disappear while applying current continuously. If not, consult the distributor. Supported input signal performance varies depending on source signal strength, reduce input signal frame rate or resolution may improve performance under such circumstance. Specifications and appearance are subject to change without notice. Product availability differs depending on region and country. This product may be subject to export control regulations. Windows, and PowerPoint are trademarks of Microsoft Corporation in the United States and other countries. Intel® is registered trademark or trademark of Intel Corporation, registered in the U.S. and other countries and regions or registered trademarks. HDMI, the HDMI logo, and High-Definition Multimedia Interface are trademarks or registered trademarks of HDMI Licensing LLC in the United States and other countries. All other trademarks are the property of their respective trademark owners. Images on screen are simulated.

For more information about Panasonic products, Please visit:
 Panasonic Business website: <https://business.panasonic.sg/>
 Facebook: <https://www.facebook.com/PanasonicSystemSolutionsAsiaPacific/>
 LinkedIn: <https://www.linkedin.com/company/panasonic-system-solutions-asia-pacific/>
 Youtube: <https://www.youtube.com/c/PanasonicSystemSolutionsAsiaPacific>



All information included here is valid as of September 2021.